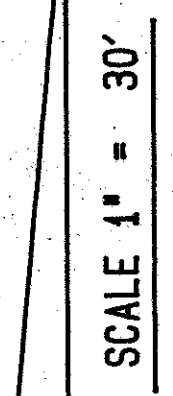


(P. U. D. - PALACIO DEL REY)

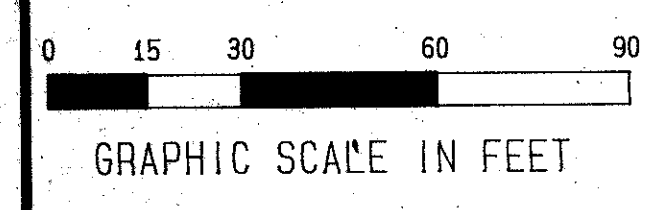
PLAT 4 OF LA CASA

A REPLAT OF A PORTION OF PLAT 1 OF LA CASA, AS RECORDED IN PLAT BOOK 58, PAGES 187 THROUGH 190 AND A PORTION OF PLAT 3 OF LA CASA, RECORDED IN PLAT BOOK 60, PAGES 79 AND 80, BOTH OF THE PUBLIC RECORDS OF PALM BEACH COUNTY, FLORIDA, LYING IN SECTION 26, TOWNSHIP 46 SOUTH, RANGE 42 EAST

N



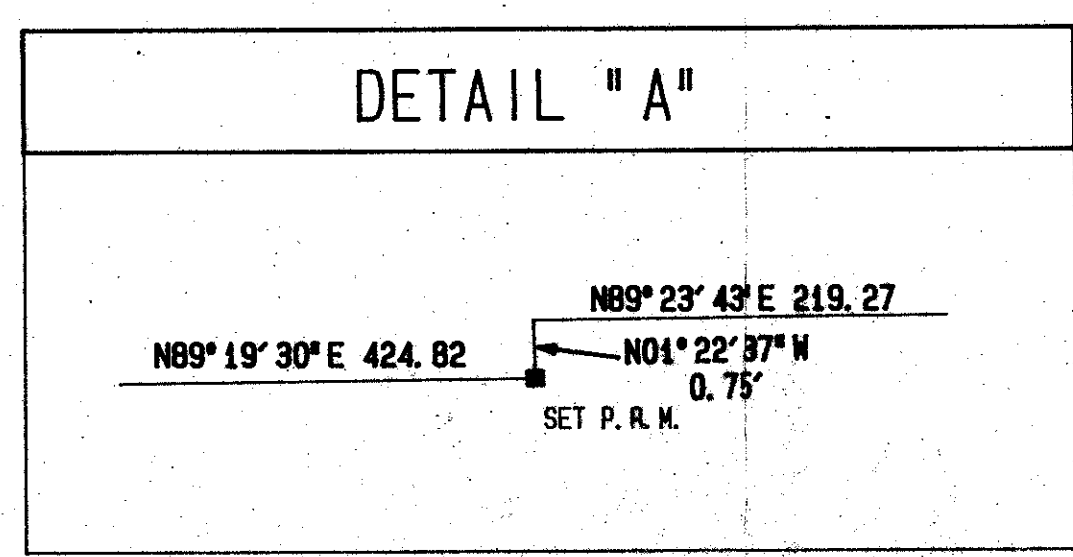
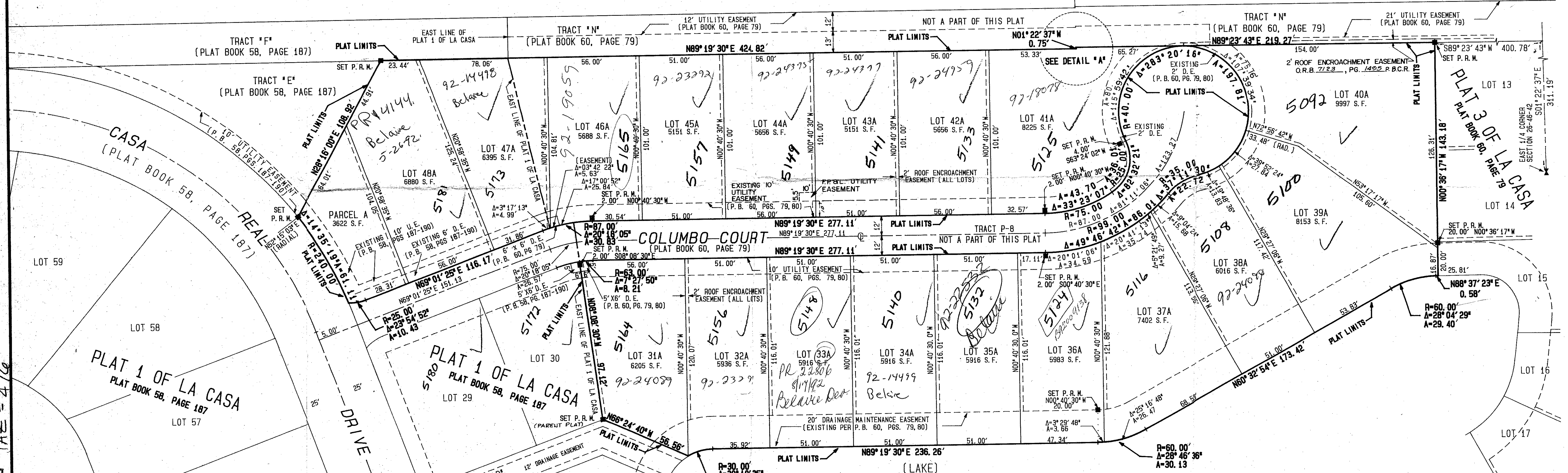
SCALE 1" = 30'



GRAPHIC SCALE IN FEET

"COUNTRY LAKE"
(P. B. 45, PGS. 165, 166)

UNPLATTED



SURVEYOR'S NOTES:

- INDICATES SET PERMANENT REFERENCE MARKER (P. R. M.) AND IS A 4" x 4" x 24" CONCRETE MONUMENT WITH BRASS DISC STAMPED WITH NUMBER 4877.
- BUILDING SETBACK LINES SHALL BE AS REQUIRED BY PALM BEACH COUNTY ZONING REGULATIONS.
- ALL LOT LINES INTERSECTING CURVES ARE NON-RADIAL UNLESS OTHERWISE SHOWN.
- THERE MAY BE ADDITIONAL RESTRICTIONS THAT ARE NOT RECORDED ON THIS PLAT THAT MAY BE FOUND IN THE PUBLIC RECORDS OF PALM BEACH COUNTY, FLORIDA.
- D. E. DENOTES DRAINAGE EASEMENT.
- U. E. DENOTES UTILITY EASEMENT.
- RAD. DENOTES RADIAL.
- S. F. DENOTES SQUARE FEET.
- BEARINGS SHOWN HEREON ARE BASED ON PLAT 3 OF LA CASA (PLAT BOOK 60, PAGE 79), WITH THE CENTERLINE OF COLUMBO COURT BEING NORTH 89°19'30" EAST.
- ALL REFERENCES TO RECORDED PLATS ARE OF THE PUBLIC RECORDS OF PALM BEACH COUNTY, FLORIDA.
- NO BUILDINGS OR ANY KIND OF CONSTRUCTION SHALL BE PLACED IN UTILITY OR DRAINAGE EASEMENTS.
- NO STRUCTURES, TREES OR SHRUBS SHALL BE PLACED ON DRAINAGE EASEMENTS OR UTILITY EASEMENTS PROVIDED FOR WATER OR SEWER.
- APPROVAL OF LANDSCAPING ON UTILITY EASEMENTS OTHER THAN WATER OR SEWER SHALL BE ONLY WITH THE APPROVAL OF ALL UTILITIES OCCUPYING SAME.
- IN INSTANCES WHERE DRAINAGE AND UTILITY EASEMENTS OVERLAP, THE DRAINAGE EASEMENT SHALL HAVE PRECEDENT.
- O. R. B. DENOTES OFFICIAL RECORD BOOK

0509-004
PET. 86-66
ALOC. #0001
6/2

PLAT 4 OF LA CASA

SUBDIVISION * PLAT 4 OF LA CASA
PAGE 2
BOOK 69
FLOOR PLAN * 220B
FLOOR PLAN * RS/SE
FLOOR PLAN * 37
PALACIO DEL REY
ZIP CODE 33445



THIS INSTRUMENT WAS PREPARED BY
MATTHEW T. WIXTED, P.L.S. 4877 STATE OF FLORIDA
GRIFFIN/EVANS & ASSOCIATES, INC.
ENGINEERS, PLANNERS & SURVEYORS
P. O. BOX 292638
DAVIE, FLORIDA 33329
(305) 452-8332